



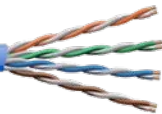
9 11.646.133 CMP UL E191596XX RoHS

GameChanger[®]

INDOOR/OUTDOOR PLENUM CABLE

The original extended-distance CAT6

⚡ 2.5 Gb/s Ethernet and 100W PoE
over 200 meters (656 feet)



GET HIGHER QUALITY WITH GAMECHANGER

- ⚡ Pulls and terminates like a CAT6
- ⚡ No need for boosters, extenders, transceivers or extra IDFs
- ⚡ Fewer possible points of failure
- ⚡ Faster, less expensive installs
- ⚡ Works with ANY Ethernet application

Maximum flexibility delivered with FEP technology

- ⚡ Can be used in any CMX, CMR or CMP environment
- ⚡ Can be used in wet, outdoor environments (in conduit)
- ⚡ Resistant to moisture, oil and gas
- ⚡ Can operate in temperatures ranging from -70°C to +200°C



Certified performance AEM, Fluke, Trend, NETSCOUT, Softing and Viavi all have GameChanger specific cable types and test limits so you can deliver certified performance.



No substitutes US Patent Nos. 10,453,589, 11,107,605, 11,562,835, 11,646,133 and 12,142,389 declare Paige as the sole manufacturer to produce and market a twisted-pair cable that supports both data and PoE applications to distances beyond 100 meters. Accept no imitations.

Part Number: 258950806 - 1000' Reel

Want more information?
(888) 423-8947 • team@paigedatacom.com
paigedatacom.com/gamechanger

